

Loadings

Imposed Load

1.5 kN/m²

Lightweight Partitions

1.0 kN/m²

Finishes

50mm screed 50mm 1.15 kN/m²

Floor Schedule

1200mm TEST PS slab

Bay	No	Typ	Lgth	Wdth	Ref
1	2	T08	4200	1200	B
1	1	T08	4200	600	D
2	2	T12	4200	1200	A
2	1	T12	4200	600	C
3	1	T08	4200	1200	B
3	1	T08	4200	1200	B1
3	1	T08	4200	600	D
4	1	T08	4200	1200	B
4	1	T08	4200	1200	B2
4	1	T08	4200	600	D
5	2	T08	4200	1200	B
5	1	T08	4200	600	D
6	2	T08	4200	1200	B
6	1	T08	4200	600	D
7	2	T08	4200	1200	B
7	1	T08	4200	600	D
8	2	T08	4200	1200	B
8	1	T08	4200	600	D
9	1	T08	2200	1200	F
9	1	T08	2200	800	G
10	1	T08	2200	1200	F
10	1	T08	2200	800	G
11	1	T08	2200	1200	F
11	1	T08	2200	800	G
12	1	T08	2200	1200	F
12	1	T08	2200	800	G
13	1	T08	4200	1200	E
13	1	T08	1800	800	H

Notes

The design load must not be exceeded during construction.

Client Sheldon Construction Ltd

Site 12 High St, Sheldon SH1 1WE

Precast Ground Floor

Scale 1:75

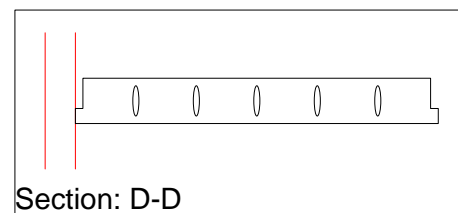
Drawn By SWW

Date 16/02/2005

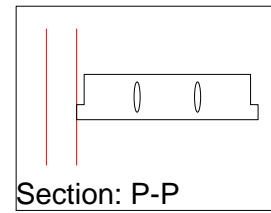
PCR Systems

01772 457327

Drawing No slabdemo



Section: D-D



Section: P-P



Winfloor 4 Demonstration Drawing